
FAVORITES

THANKS TO:

- * Beta Sigma Phi, Gaylord Chapter *
- * First Congregational Church *
UCC, Gaylord



Otsego County
LIBRARY
otsegoountylibrary.org

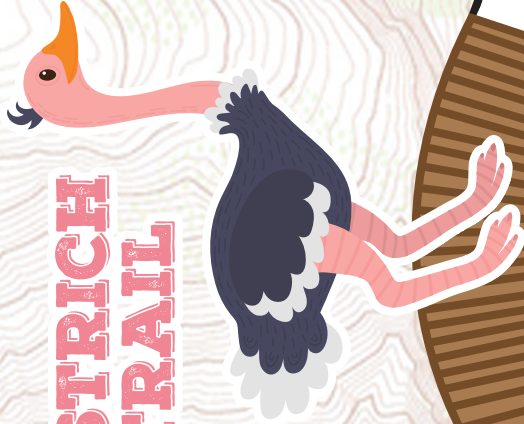
QUESTIONS?

Call us at 989-732-5841
Email us at ocl@otsego.org

FAVORITES



OSTRICH TRAIL



A winding path made of numbered boxes, starting at 1 and ending at 200. The path is designed to be cut out and used as a tracking sheet. The numbers are: 1, 10, 20, 30, 40, 50, 60, 70, 80, 90, 100, 110, 120, 130, 140, 150, 160, 170, 180, 190, 200.

Otsego County
LIBRARY
otsego-county-library.org
Read • Learn • Grow • Explore



Color a box for each book read.
Keep track of favorite titles on the back of the tracking sheet.
When finished bring to the Library to receive a prize and your next tracking sheet.