

You Spoke...We Listened!

In 2003, voters turned down a bond issue for a new library. Based on your feedback, we've revised our plan:

Location - this plan expands our current library on your preferred site

Size - we revisited population projections and library trends to 'right size' the library for the next 20 years

Cost - price tag drops from \$6.4 million to \$2.19 million

Timing - the library board waited to see signs of economic recovery before approaching the county for the go ahead to move forward. 13 years later, it's time!

*It's the Library you love...
Just bigger and better*



Library Mission

The Otsego County Library enriches lives by fostering lifelong learning, being a champion for reading, igniting imaginations, and ensuring access to information and ideas for all members of our community.



700 S. Otsego Avenue
 Gaylord, Michigan 49735
 (989) 732-5841

ocl@otsego.org

www.otsegocountylibrary.org

RIGHT TIME...RIGHT SIZE

Otsego County Library Façade Improvement and Expansion Project

On November 8, Otsego County voters will be asked to cast their vote on a ballot issue that will determine the future of the library.



The Library's new Entrance Plaza features a welcoming look with outdoor seating, low maintenance landscaping and improved lighting and safety enhancements.

Otsego County Library Façade improvement and Expansion Project

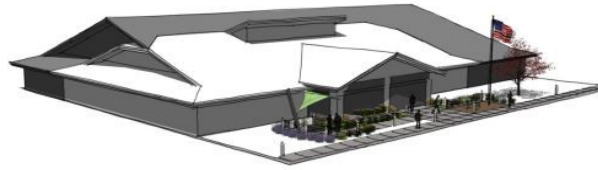
Why Now?

The Library was built in 1984 and our county's growth has far surpassed the original design population. Space in the main library and two branches totals just .45 square feet per capita, far below the median of 1.43 sq. ft. per capita for libraries in our region and less than 1/2 the median of 1.1 sq. ft. per capita for libraries serving similar populations statewide.

A Phase I interior renovation was completed in 2010, but we held off on expensive exterior work until we could move forward with our Phase II expansion to also solve space needs.

Exterior maintenance issues have now reached a critical point:

- Roof is in need of replacement;
- Exterior metal doors are rusted - frames are coming loose from the masonry;
- Sidewalks are pitted and unsafe. Ramps need to be added for accessibility;
- Asphalt in the south parking lot is breaking up; cracks and a 'sink hole' are causing water and icing hazards;
- Brick planters are crumbling, landscaping is overgrown and unhealthy, and the 30+ year sprinkler system must be replaced;
- Exterior lighting is inadequate and the wood posts are deteriorating at the base.



An L-shaped addition with two levels makes maximum use of the current site. The existing library is "tucked under" a replacement roof.

NEW VIEW FROM SOUTHEAST

The current library space will remain as renovated in the 2010 Phase I project. Spaces will be reconfigured to provide quiet areas, individual and group study rooms, a local history room, and additional seating. Shelving will be retrofitted to proper heights for safety and reachability.

The 7,430 sq. ft. main floor addition will add much needed space to expand programming for all ages. Families will enjoy larger youth areas where children can learn and explore in age appropriate spaces. Both the main level activity room and lower level meeting room will be available to community groups with access through an after hours entrance. The 7,430 sq. ft. lower level will also provide space for mechanical, storage, and future use.

IT'S YOUR VOTE...USE IT!

What will this cost?

The total project cost, including furniture and equipment, is \$2.97 million. Through frugal spending over many years, the Library has set aside \$787,500 for repairs and improvements, lowering the funding request to \$2.19 million.



What is YOUR cost?

The millage request is for .375 mill for 6 years. The cost for a home with a market value of \$100,000 is just **\$18.75 per year**.

The library currently operates on 4/10 mill. With approval of an additional .375 mill for expansion, our taxpayers would still pay less than the median millage rate of .85 mill for libraries in the northern region and 1.0 mill for comparable libraries statewide.

Deadline to register to vote in the November election is October 11. Can't make it to the polls? Contact your city or township clerk to apply for an absentee ballot. For more information about this election, stop by the Library.